



# Just Browsing

---

---

**Newsletter**

**June 2010**

---

---

## CHAIRMAN'S CHAT - Term 2, 2010



Once every term we hold a so called "Open Day" for the public. The purpose is to invite people in our age group to come and see what we are doing at the school, find out if we can be any help to them and encourage them to join us as members.

During Term 1 I reported that we had had a very good response to our "Open day". When we did the same Open Day again, before the start of Term 2, we had our hopes up, but for no reason that we could figure out, not many turned up that day. However we are very pleased to welcome those new members that did come. We hope the courses they joined are to their liking and as interesting as expected.

For the last few years we have been offering a small number of 2-hour workshops each term. Each workshop is self contained and teaches you about a specific subject. Just recently we decided to circulate an email amongst our members to discover if there is interest in other possible subjects.

We came up with a list of options, just to test the water and got a reasonable number of replies, but it's not too late to make your own suggestions. The plan is to pick out the popular choices and arrange some new Workshops along those lines. We may then offer these types of Workshops by sending out an email message during the Term.

As you may be aware SeniorNet-Porirua is a member of the Federation of SeniorNet branches throughout New Zealand. Membership is voluntary but a good number of the local groups have joined because they all share a common vision and there is an obvious advantage in numbers and sharing resources, nationwide.

Over the last three years the Federation has commissioned a research project to collect some statistics on the make up and activities of the general membership.

One important factor to keep us all going is "funding". Apart from the fees we collect directly from our student members to pay for the courses, we are able to receive supplementary money from the Tertiary Education Commission or TEC as it is known. This is calculated on the basis of the number of "Learner-hours" each group produces during the term. An 8 week course of 2 hours per session gives us 16 learner-hours per student for example.

Taken over the whole of the country the total number of Learner-hours is a good indication of how effective the SeniorNet movement is working. Just for the record here are some figures (rounded off):

Year 2007 -134,600 Lh    Year 2008 -135,600 Lh  
Year 2009 -139.00 Lh

In other words a steady increase. An other statistic which we can relate to is the ratio of female to male students enrolling in courses. The ratio is roughly a two to one.

One aspect of the current funding arrangement is that the government may decide to cut back on TEC spending, which could indirectly impinge on the way we operate. No one knows yet but we have to tread cautiously just in case.

By the time you receive this Newsletter Term 2 will probably have finished. We have had a slightly reduced number of classes this term (5 to be precise), but from what I have observed our Students have taken a keen interest and have worked away at their projects with enthusiasm. Now that it is truly winter time it's often cold and wet outside but our class room is always warm and welcoming. We hope to see you again next term.

*Peter Badart - Chairman*

## APPLICATIONS CLOSE FOR TERM 2

Wednesday	7 July
-----------	--------

## SENIORNET - START OF TERM 3

Monday	26 July
--------	---------

## PUBLIC HOLIDAY

Monday	25 October	Labour Day
--------	------------	------------



## ARTICLES FOR NEXT NEWSLETTER

Would you like to contribute anything to our next newsletter?

I really need some shortcut tips / hints for Word 2007 please that are not in the manuals. I usually check all the tips I have before putting them in the newsletter – so please make sure they work before sending them to me. The next newsletter is not until September so send your contributions to: [margots@xtra.co.nz](mailto:margots@xtra.co.nz) and put 'SeniorNet Newsletter Tips' in the Subject line.



Special thanks to all the members who bring lovely cakes, muffins, home made biscuits, chocolate biscuits etc for our tea breaks. Food for the brain!



## AN OPEN DAY WILL BE HELD

**Monday 5 July**

**Where:** Ngati Toa School  
Piko Street, Titahi Bay  
Room 2

**Time:** 9.30am – 12.30pm



**You are all welcome to attend and please bring a friend.**

- \* Come and talk to our tutors
- \* Receive Assistance
- \* Check out the equipment
- \* Friendly atmosphere

**Light refreshments will be served**



## A VERY WARM WELCOME TO NEW MEMBERS FOR TERM TWO



Beth Holden  
Ngawai Richardson  
Mary Stapley

Murray Holden  
Cheryl Scott  
Margaret Sutherland



*Hey! Dad! This format thingy really cleans up your computer*

## ENJOY THIS EASTER EGG!


Egg Title: A Plus Symbol Mouse Icon **+**

How to crack it:

1) Start Microsoft Word

2) Press this key combination:

**Ctrl** plus **Alt** plus **=**

3) To cancel press Esc  (Escape)  
or exit Word

(Or you might like to keep it so that you can see it better when working in Word)

### What is an Easter Egg?

You are probably wondering what it is. (Well, you can't eat this kind.)

An Easter Egg is a hidden feature or novelty that the programmers put in this software, these Easter eggs can show things such as the complete list of developers to commands, jokes, and animations.

---

*\* Customer: "Excuse me can I use this disk? It has a hole in it."*

---

## WEB PAGE ERRORS

We all get them, those annoying little errors when we are surfing the web.

Here are a few that *might* come up now and then – and what to do when that happens.

### Error 404 - Page not found

**Problem:** The address is incorrect. The page may have moved. The page no longer exists. The link is incorrect. You are not connected to the Internet.

**Options:** Connect to the Internet. Check the webpage address. Try the homepage (delete everything past the first "/" after the name) and look for links to the page you want. Try using the search engine to find it.

## File contains no data

**Problem:** You've connected to a server that doesn't have any Web documents on it.

**Options:** Try the URL once more. If you still get the same message, try again later: it may be that you've stumbled onto the site just as its being updated.



## THANKS TO THESE TERM 2 TUTORS

### Introduction to Computers

Enid Alexander          Graham Alexander

### Word Processing – Level 1

Margot Stuart          Sean O'Neil  
Peter Phipps

**Email and Internet**    Bob Pretty

**Desktop Publishing**    Dave Thorpe

## WORKSHOPS

**Flash drives**          Ron Dunbar  
**Skype**                  Peter Badart

---

## MICROSOFT WORD HELP

### Moving a paragraph down one line without creating another paragraph

Place insertion point inside the paragraph and press Ctrl + 0 (zero)

### Another way of moving text by the keyboard

Text can be moved quite precisely by using the keyboard instead of the mouse.

1. Select / highlight the text to move it
2. Tap the F2 key
3. With an arrow key move the cursor to the desired location
4. Tap Enter.

## Jump between Words and Paragraphs

*Keyboard shortcuts to help you move more quickly to navigate Word documents*

Instead of using your cursor keys to slowly move through your document, you can use the CONTROL (ctrl) key and then press the arrow keys



Ctrl and Left Arrow:  
Moves to the previous word

Ctrl and Right Arrow  
Moves to the next word

Ctrl and Up Arrow  
Moves to the previous Paragraph

Ctrl and Down Arrow  
Moves to the next paragraph

## Repair Word

If you are having constant problems with Word, you may want to try the built-in repair functionality that can fix shortcuts, reset settings to their default, and more.

1. Click "Help" then "Detect and Repair"
2. Read the dialog box text. This feature will try to automatically find and fix errors in all Office files
3. If desired, check "Restore my shortcuts while repairing" and / or "Discard my customized settings and restore default settings."
4. Click "Cancel" to skip the repair process or "Start" to enable automatic repairing



## Give your Word documents a Background Picture or photograph

For maximum readability, choose photos or pictures with large areas of white space or change your text color to make it stand out from the picture's colours.

1. Choose "Format", "Background" then "Fill Effects".
2. When the "Fill Effects" multi-tabbed dialog box appears, select the "Picture" tab
3. Click the "Select Picture" button
4. Browse your computer for your picture file to use and click "Insert"
5. Click "OK" to close the dialog box



## Large Toolbar icons

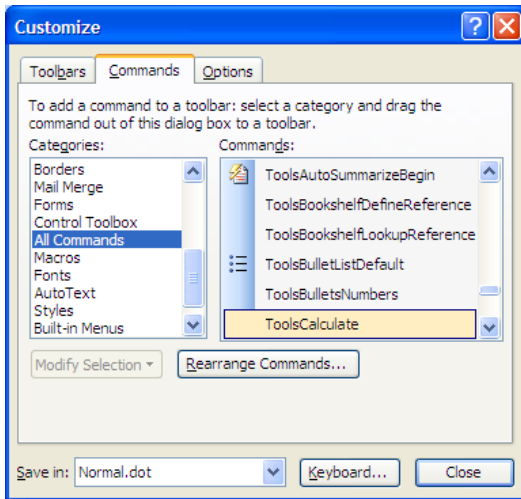
*If you are having trouble making out the toolbar icons you can enlarge them!*

1. Click "Tools" – "Customize".
2. When the "Customize" multi-tabbed dialog box appears, select the "Options" tab
3. Check "Large icons".
4. Click "Close" to save your settings

*Are computers addictive?" "Oh, no, they just take up all the time you have".*

## Built in Calculator

1. Click on 'Tools; then 'Customize'
2. Select 'All Commands' in the Categories menu.
3. Then find and highlight 'ToolsCalculate' in the Command list as in picture below.
4. Drag and drop into a toolbar and it's ready to use



Now, enter in a sum, using the normal plus+, minus -, divide / and multiply \*. etc.

Highlight the sum and click your ToolsCalculate button on your toolbar and the answer will appear in the left hand corner of the status bar at the bottom of the screen

---

## NZ on Screen - 25 Years of Television

This is a delight! Many clips, one after the other -- each about 10 minutes long. You will love it!

Explore hundreds of titles, all free to watch Meet the people – in front of and behind the camera

Check out 'making of' stories in ScreenTalk. Engage in our forums: suggest and discuss. Edited highlights - 40 years of Country Calendar the longest running show on New Zealand TV and many other clips

[www.nzonscreen.com](http://www.nzonscreen.com)

## CLEANING POEM

I asked the Lord to tell me  
Why my house is such a mess.  
He asked me if I'd been 'computering',  
And I had to answer 'yes'

He told me to get off my backside  
And tidy up the house.  
And so I started cleaning up....  
The smudges off my mouse

I wiped and shined the topside.  
That really did the trick ....  
I didn't mean to 'click'

But click, I did, and oops. I found  
A real absorbing site  
That I got SO way into it  
I was into it all night

Nothing's changed except my mouse  
It's very, very shiny.  
I guess my house will stay a mess ....  
While I sit here on my hiney

Wherever else this prayer may reach  
To each and every friend,  
Bless each e-mail inbox  
And each person who hits 'send'



(Note – this is a shortened version of the original as it was very long. If anyone would like the full version please email me)

---

*"Tech Support: "What type of computer do you own?"*

*Customer: "I don't know. I just bought it.""*



*Life is short!  
Break the rules!  
Forgive quickly!  
Laugh uncontrollably...  
And never forget anything  
that made you smile*

---

## ACCENTS AND SPECIAL CHARACTERS

Word has a built-in facility for producing accented character.

For example, to insert an **acute** accent over a, e, i, o, or u ....do the following.

1. Press and hold down the **Ctrl** key
2. Press the Apostrophe key
3. Release both – then tap the letter you want and you then get these. **á, é, í, ó, ú**

These are the same letters but with the **grave** accent

1. Press and hold down the **Ctrl** key
2. Press the 'Grave' key (located on the top left of your keyboard beside number 1)
3. Release both – then tap the letter you want and you then get these. **à, è, ì, ò, ù**

---

## EVENING POST – PAPERS PAST

Digitising Wellington's newspapers has leapt forward, covering decades of historic issues.

The latest instalment, of editions from 1916 to 1945 should be viewable and searchable, by the end of June

[www.paperpast.natlib.govt.nz](http://www.paperpast.natlib.govt.nz)



## GRAVE CARE WELLINGTON



This site offers a service to care for the final resting place of a departed loved one if you are finding it difficult to attend

1. They have paint samples for repainting inscriptions
2. An assortment of flowers
3. A monumental mason will carry out repairs
4. The follow up service is 6 monthly, yearly or as discussed by you

[www.gravecarewellington.co.nz](http://www.gravecarewellington.co.nz)

### Leave Tributes

This is a great little site where you can put in your own tributes for someone who has died recently or in the last few years.

There is also a search engine on the site where you can just type in the surname.

All the tributes are there for everyone to see instead of just writing in a book at the church. You can still do that though – but this is another option

<http://www.tributes.co.nz>

---

### Grave Melodies

A couple of days after Mozart passed away, all the local musicians and composers went to the cemetery to pay their respects. They heard a strange noise coming from the grave. They listened for a moment, then one said: "Ah, yes, that's Mozart's Ninth Symphony, being played backwards."

They listened a while longer. Then another said:

"There's the Eighth symphony, and it's backwards, too. Most puzzling." They kept listening. "There's the Seventh ..the Sixth ..the Fifth...."

Suddenly came the dawn. One of them stood up and announced to the crowd that had gathered in the cemetery.

"My fellow musicians, there's nothing to worry about. It's just Mozart decomposing."

*You don't stop laughing because you've grown old.*

*You grow old because you've stopped laughing*

---

## EMAIL – HELPLINE

### How does using Bcc help reduce spam?



It's all about keeping their email addresses private and un-harvestable. Your friend has emailed you some humour, and CC'd a number of other people.

Think about that for a moment. You can see all the email addresses on the CC line. If you're a spammer, you just got 5 more known-valid email addresses that you can add to your list of email addresses to spam. In fact, any of the people on the CC line could do this as well.

Use BCC for the recipients. This will prevent the email addresses you send the humour to from being visible to the people that get it.

Delete any email addresses in the body of the message before you send. This will remove all the prior recipients from being visible, and has the added benefit of making the email easier to read.

1. Instead of entering all those addresses on the TO or CC lines, we send the message "to" ourselves, and put all the rest of the recipients on the BCC line.
2. After pressing the "Forward" button, but before pressing "Send", click in the body of the message and simply delete all the lines that are nothing more than forwarded email headers.

## ACCESSIBILITY SHORTCUTS FOR WORD

### Sticky Keys

This lets you use the SHIFT, CTRL, ALT or Windows Logo keys by pressing one key at a time

\* Press SHIFT five times: Toggles StickyKeys on and off

### Filter Keys

This causes windows to ignore brief or repeated keystrokes and slows down the keyboard rate.

\* Press down and hold the right SHIFT key for eight seconds

### Toggle Keys

This causes a tone to sound when you press the CAPS LOCK, NUM LOCK or SCROLL LOCK keys,

\* Press down and hold the NUM LOCK key for five seconds

### Mouse Keys

This lets you control the mouse pointer by using the numeric keypad on your keyboard

\* Left ALT+ left SHIFT+ NUM LOCK: Toggles MouseKeys on and off

---



**Laptop**

Whar the kittie naps

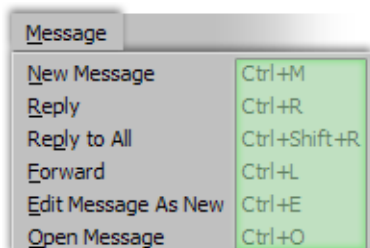
\* *Tech Support: "Now, go back to your desktop."*

\* *Customer: "I don't have a desktop. I have a laptop"*

## THUNDERBIRD TIPS – EMAIL (Keyboard shortcuts)



If you don't like using your mouse you can use the keyboard control keys instead



The (modified) screenshot on the left is Thunderbird's "Message" menu, with the keyboard shortcuts artificially highlighted in green.

To reply to an email, for example, you can hold down the control key ("Ctrl") and press "R", (while still holding down the Ctrl key.) as mentioned in the above picture

To reply to all recipients of the email, hold down both Ctrl and Shift, and press "R"

---

### Formatting Shortcuts

Ctrl + B	Bold
Ctrl + U	Underlined
Ctrl + I	Italic
Ctrl + L	Insert Link
Ctrl + A	Select All
Ctrl + X	Cut selected text
Ctrl + C	Copy selected text
Ctrl + V	Paste
Ctrl + K	Check spelling



Keyboard

What ya hang the dang truck keys

## Dictionary of NZ Biographies

More than 3000 biographies with photographs. Slice of history through the people who made it. Find an ancestor!

[www.dnzb.govt.nz](http://www.dnzb.govt.nz)

### Glossary of last name meanings

Have you ever wondered about the meaning of your last name or where your family came from?

Browse to the appropriate letter in the Last Name Meanings and Origins Glossary for your last name.

[http://genealogy.about.com/library/surnames/bl\\_meaning.htm](http://genealogy.about.com/library/surnames/bl_meaning.htm)

### Ancient Faces

Search your surname and see if you can find photographs from a distant relative maybe. Or, you can add your own old photographs to the site and see if anyone is searching for you.

[www.ancientfaces.com](http://www.ancientfaces.com)

---

## OUT OF THE MOUTHS OF KIDS



Tammy (age 4) was with her mother when they met an elderly,

rather wrinkled woman her mom knew. Tammy looked at her for a while and then asked, "Why doesn't your skin fit your face?"

Susan (age 4) was drinking juice when she got the hiccups. "Please don't give me this juice again," she said. "It makes my teeth cough"

---

*Laughter is the sun that drives winter from the human face....Victor Hugo*

## LATEST SCAM REPORTS

The following email and Short Message Service (SMS) text message-based scams have been reported to the Anti-Spam Compliance Unit and are provided below for your information. Please note that this list does not cover all scams currently circulating.

[http://www.dia.govt.nz/diawebsite.nsf/wpg\\_URL/Services-Anti-Spam-Reported-scams?OpenDocument](http://www.dia.govt.nz/diawebsite.nsf/wpg_URL/Services-Anti-Spam-Reported-scams?OpenDocument)

### McDonald's Survey Phishing Scam Email

Email, purporting to be from McDonald's, claims that recipients can get a \$50 bonus for filling in a "quick 7 question survey"

<http://www.hoax-slayer.com/mcdonalds-survey-phishing-scam.shtml>

---

### Notice in Church Kitchen

*Will all the ladies please rinse out the teapots  
Then stand upside down in the sink  
On no account must hot bottoms be placed  
on the worktops*

---

## ACRONYMS, ABBREVIATIONS, OR INITIALISMS



What do they stand for?

With more than 900,000 human-edited definitions, Acronym Finder is the world's largest and most comprehensive dictionary. It contains more than 4 million acronyms and abbreviations.

<http://www.acronymfinder.com>

---

*Tech Support:*

*Click on the computer icon on the left side of the screen.*

*Customer: Is that your left or my left?*

## COAT OF ARMS - PORIRUA



The arms were granted on 1st December 1965.

The shield is green and is charged with two piles divided into five silver and five blue wavy bars. The green colour of the field depicts the greenness and rural atmosphere of the countryside which existed when Porirua was first settled. The blue and white triangles (Piles) are symbolic of the two arms of the Porirua Harbour.

The Crest is a Whale in natural shape and colour in front of an ancient galley with sail set red Pennon and blue flags flying. The whole surmounts a wreath of green and silver. The mantlings are green and silver with colours reversed on each side. The Whale recalls the main occupation of the first European settlers at Porirua and Titahi Bay whilst the galley, or sailing ship, recalls the ships which were so very much in evidence in Porirua Harbour between 1830 and 1850.

The Soldier supporter recalls that the 58th Regiment was one of the British regiments which spent some time in the Porirua district in the early days of its settlement. The Maori warrior symbolises the long association of the Maori people with Porirua.

The Motto "Mo Te Katoa Nga mahi" is translated "All That is Done is For the Benefit of All".

---

## COMMITTEE PROFILES



Some members do not know all our committee, so I will be keeping you up to date with their profiles in upcoming newsletters.

There are 3 this month - Laurie Davies – Secretary, Peter Badart – Chairman and myself – Margot Stuart - Newsletter Editor

## PROFILE - PETER BADART (Chairman)



I am an emigrant from Holland and came to New Zealand in 1959 with my wife, Elisabeth. I have since spent my working career in the radio and tele-communications field. Around 1974 we moved our family to Tawa when I joined a local company.

From an early stage I have had an interest in environmental issues and in the 70's and 80's I was active in the local Forest and Bird branch. My hobbies include Photography, Drawing, Printmaking and Painting and I was a member of the Tawa-Mana Arts group for a number of years.

I also share a lifelong passion for music, jazz and pop and classical with Elisabeth.

We have brought up three children, one daughter and two sons and are now proud grandparents to five grand children.

When I approached retirement age I looked for an outlet to put my experience to alternative use. Around this time I became aware of SeniorNet.

I met Laurie Davies at a public meeting in Pataka where he proposed to start a local SeniorNet. I offered my services and joined.

I have been active, both teaching and taking courses since SeniorNet Porirua started, initially at Whitireia College. I joined the committee when we moved to Ngati Toa School.

---

## FREE PRINTABLE CERTIFICATES

Do you need certificates for work or fun? Here you can find more than 500 free certificate designs that you can download and print. Excellence, Births, Diplomas, Marriage, Appreciation, Kids, Holiday, Jokes, Gifts and more ....

Download & print instantly!

<http://www.freeprintablecertificates.net>

*A user phones up quite frustrated because there is a message on the screen which reads: Press Any Key To Continue.*



*The user is complaining bitterly because this key (Any) is not found anywhere on the keyboard, how can work be done when you don't have all the keys available!?*

---

## YOUR EMERGENCY PLAN

**Civil Defence:**  
Find out what you need to do to...



Find out what to do in an emergency. This has details on how to deal with floods, storms, earthquakes etc and who to contact.

[www.getthru.govt.nz](http://www.getthru.govt.nz)



---

Customer: *"Right, this computer's gone all crazy. It's blinking, beeping, and doing all sorts of stuff!"*

Salesperson: *"What were you doing with the computer at the time?"*

Customer: *"I was dusting it."*



## PROFILE – LAURIE DAVIES (Secretary)



After completing a Chemistry degree at Otago University and attending Dunedin Teacher's Training College I first taught Science and Mathematics at King Edward Technical College in Dunedin followed by two years teaching at King's High School. By now I was married and on the country service salary bar so, off to the country to Ashburton High School teaching Chemistry, Physics and Biology. This led to a head of science position at the newly formed Ashburton College, a school of some 1200 students.

My last teaching position was as Deputy Principal at Queen Charlotte College in Picton from which in 1978 I joined the Education Department in Christchurch as a science inspector. In 1982 the opportunity came to take the position of Senior Science Inspector in Wellington and here we are.

After 'retiring' in 1987 I became the Director of Secondary Teacher Training for the Wellington Teachers College and then from 1993 until 2002 worked part-time for NZQA approving Sixth Form Certificate courses.

In 2002, at the Grey Power conference in Christchurch, Peter Rutledge and I met up with Grant Sidaway who had introduced SeniorNet into New Zealand and with his encouragement we decided to start SeniorNet in Porirua and the rest, as they say, is history.

---

*These days, I spend a lot of time thinking about the hereafter. I go somewhere to get something ... then wonder what I'm here after*

---

### QUOTE OF THE DAY

The only means of strengthening one's intellect is to make up one's mind about nothing -- to let the mind be a thoroughfare for all thoughts. –  
*John Keats, poet (1795-1821)*

## MORE TRUE STORIES FROM TECHNICAL SUPPORT:



Customer: Hi, this is Celine. I can't get my CD out.

Tech Support: Have you tried pushing the button?

Customer: Yes, sure, it's really stuck.

Tech Support: That doesn't sound good; I'll make a note.

Customer: No ... wait a minute ... I hadn't inserted it yet ... it's still on my desk ... sorry ...



**Modem**  
Whutcha do ta the hay fields



**Monitor**  
Keepin' an eye on 'er

## WHAT IS THE DIFFERENCE BETWEEN NOTEPAD AND WORDPAD?



Notepad **Notepad**

Perhaps the most noticeable difference between Notepad and WordPad is the ability to format a document's text. Because it is a text editor and not a true word processor, Notepad does not store formatting commands, such as font style, within a document file.

Notepad deals strictly with content. In other words, text only means just that; a Notepad document contains nothing but text characters.

For viewing and printing purposes, Notepad does offer some font control. However, the settings are stored in Notepad, they apply to the entire document, and they don't affect how the document displays or prints on other computers.



## Wordpad

By contrast, WordPad offers formatting capabilities such as font style, font size, bold, italics, underline, and coloured text, which you can apply to a single word, portions of text, or the entire document.

WordPad's format information is stored within the document, so it displays on other computers in the same way.

Another difference between Notepad and WordPad is the way in which you can format paragraphs. In Notepad, you can indent paragraphs only with spaces, and you can't apply settings for tabs, bullets, or text alignment. WordPad includes options for all these features.



*I refuse to think of them as chin hairs. I think of them as stray eyebrows*



## SEE WHAT'S ON AT YOUR LOCAL THEATRE

### Mana Little Theatre

*Imaginary Lines* by Reggie Oliver  
23 June – 3 July  
Phone: 233.1842

### Porirua Little Theatre – Titahi Bay

*Don't Dress for Dinner* by Marc Camoletti  
18 June – 3 July  
<http://www.iticket.co.nz/events/2010/jun/dont-dress-for-dinner/>

*Aladdin* – (Pantomime)

13 – 16 July (daytime - School Holidays)

Tuesday & Wednesday 2pm  
Thursday & Friday 11am & 2pm

<http://www.iticketexpress.co.nz/events/2010/jul/aladdin/>

## Tawa Community Theatre

*Nunsense* – by Dan Goggin

1 July -10 July

Weekend matinees – 4pm

Phone 232.3711

<http://tawatheatre.wellington.net.nz>

## PROFILE – MARGOT STUART (Newsletter Editor)



I grew up with 4 sisters. Mum - Ellinore Ginn was an artist - and Dad Russell was an Aviation Insurance officer. My paternal grandmother was a singing teacher - Anna Ginn.

Some of my work and voluntary experience include: - Nurse Aiding at Home of Compassion, Carer at St Barnabas's for Children, Pen repairer at E J Hyams, Shop Assistant, Toll Operator. Age Concern, Foundation for the Blind, Secretary Porirua Little Theatre and U3A,

Interests include – computing, walking, knitting, most music, reading 5-7 books a week while eating chocolate (my vice) with a cup of tea

After my parents died I got stuck into computers and tried to learn html (not very good at it yet – but now have help) and made my own website for my late mother.  
[www.ellinoreginn.co.nz](http://www.ellinoreginn.co.nz)

When I saw the ad for a meeting to start up a local SeniorNet group, I was thrilled and that is when I met Laurie Davies and put my name down to help. I have never looked back We meet so many interesting people in classes that it is a joy to be able to help them. I have taken courses myself and tutored over the years at Whitireia and now at Ngati Toa School.

*That's all for now folks*



## SENIORNET PORIRUA COMMITTEE 2010



	NAME	PHONE NUMBER	E-MAIL
Chair	Peter Badart	232.8241	<a href="mailto:pbadart@paradise.net.nz">pbadart@paradise.net.nz</a>
Secretary	Laurie Davies	234.7517	<a href="mailto:daviess@clear.net.nz">daviess@clear.net.nz</a>
Treasurer	Graeme Ellett	232.6488	<a href="mailto:ellettg@globe.net.nz">ellettg@globe.net.nz</a>
Committee	Lyndel Borrie	236.7714	<a href="mailto:lyndel.borrie@ihug.co.nz">lyndel.borrie@ihug.co.nz</a>
Committee	Jim Dearsly	234.6111	<a href="mailto:jim.dearsly@xtra.co.nz">jim.dearsly@xtra.co.nz</a>
Committee	Hunt Dryburgh	234.8139	<a href="mailto:hunt.dryburgh@xtra.co.nz">hunt.dryburgh@xtra.co.nz</a>
Committee	Ron Dunbar	237.7156	<a href="mailto:ron-d@slingshot.co.nz">ron-d@slingshot.co.nz</a>
Committee	Peter Phipps	239.9092	<a href="mailto:phipps@actrix.co.nz">phipps@actrix.co.nz</a>
Committee	Margot Stuart	236.6217	<a href="mailto:margots@xtra.co.nz">margots@xtra.co.nz</a>
Committee	Dave Thorpe	235.7365	<a href="mailto:d_thorpe@xtra.co.nz">d_thorpe@xtra.co.nz</a>
Committee	Colin Young	233.1067	<a href="mailto:youngcw@xtra.co.nz">youngcw@xtra.co.nz</a>

### SeniorNet Porirua Website

<a href="http://www.seniornet-porirua.org.nz">www.seniornet-porirua.org.nz</a>	Bob Pretty Administrator	237.9925	<a href="mailto:bpretty@clear.net.nz">bpretty@clear.net.nz</a>
--	-----------------------------	----------	--

### Our Contact Details

<b>Postal Address</b> SeniorNet Porirua PO Box 50.034 Porirua 5240	<b>SeniorNet Classroom Phone:</b> 236.5314	<b>Premises</b> Ngatittoa School Piko Street Titahi Bay 5022	<b>School Phone</b> 236.7785
---	--	---	---------------------------------